



Address: Rhineland-Palatinate, Germany. Completion: 2012. Construction period: 2009-2012. Special Features: monument protection. Materials: Sand stone, teak, glass mosaic.



↑ | Interior view, swimming pool and water massage  
→ | Interior view, wading pool

## Fortress near the Rhine

Rhineland-Palatinate

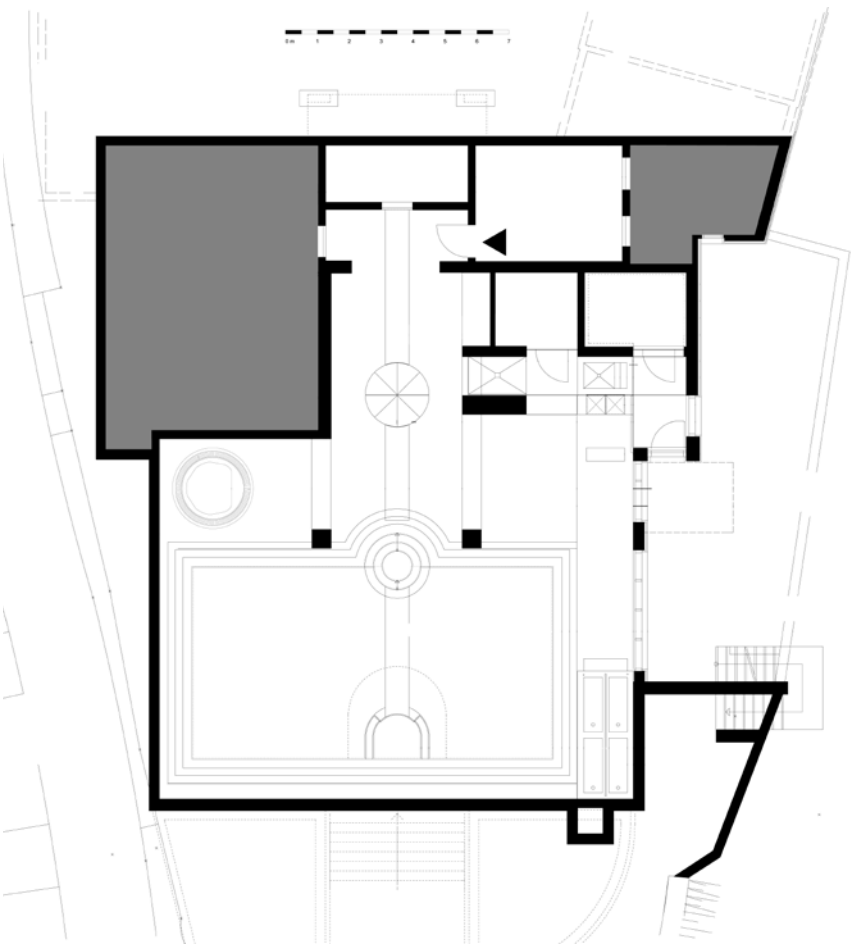
The historic 11th century fortress is prominently located on a steep rocky promontory in a curved brook valley.

Its interior design layout and atmosphere include reception and communication areas on an equal footing with retreat areas.

The basement area of the annex contains the wellness section whose regenerative function is particularly abstracted and highlighted. For the living areas, material such as bronze, smoked oak and sandstone from the region were used, with a preference for materials that can age in dignity and that symbolize quality and strength from the outset. A hand-crafted impression with interplay of matte and glossy, structured and smooth surfaces was chosen as contrast for the perception of light and shadow. It is a deliberate contrast between the historic fortress setting and modern interior design.







- ↑ | Interior view, water run
- ↙ | Plan Spa
- ↗ | Interior view, water bar and cold treatments
- | Interior view, dip tank





