

CHRIS VAN UFFELEN

Posh & Proud

INTERIOR DESIGN DELUXE

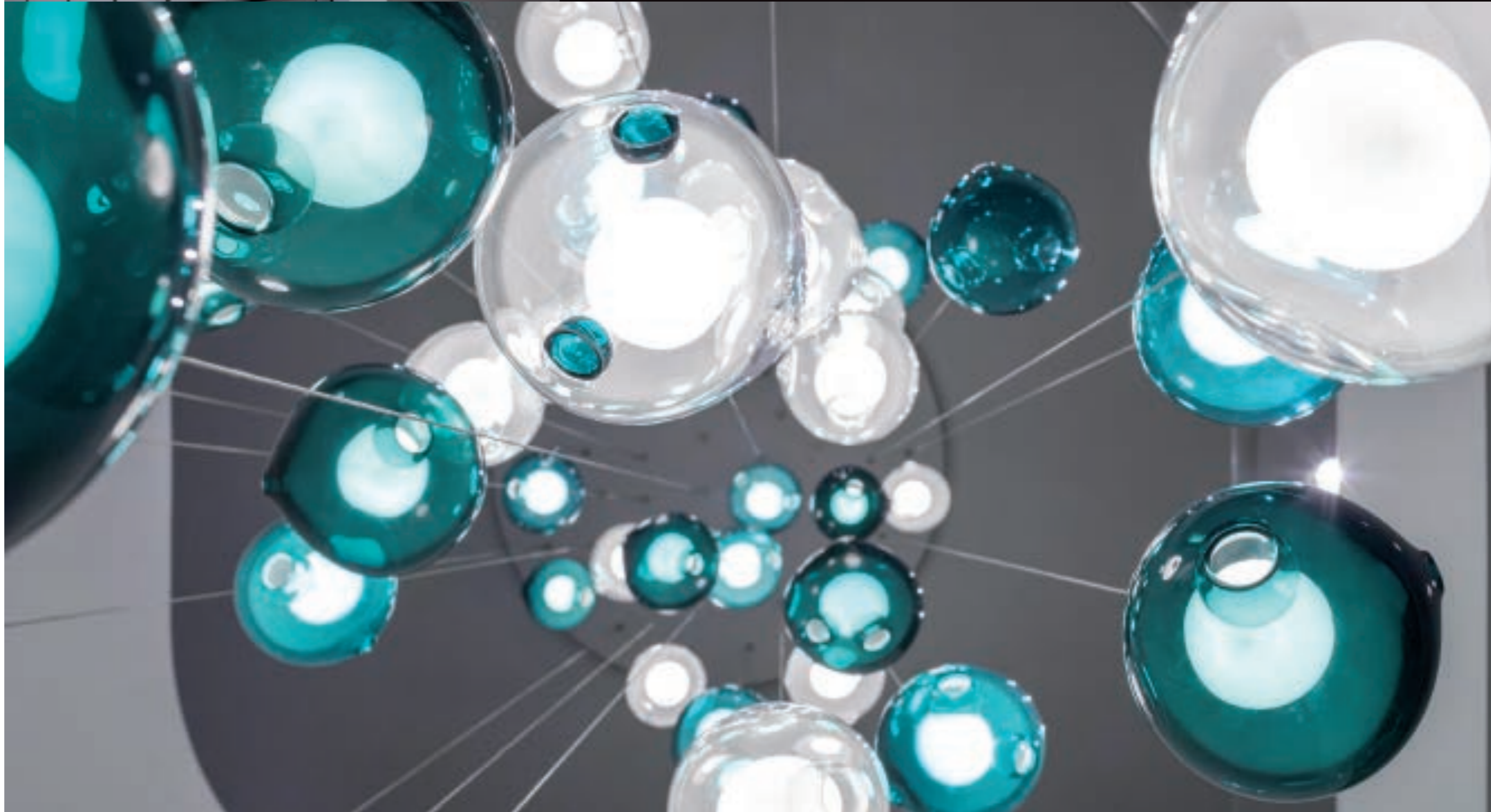


The "House in the Park" forms the central element of an expansive park, adjacent to a lake and blending in harmoniously with the surrounding terrain. An avenue leads towards the residence, elegantly framing the broadening route and the lush green flora. After extensive renovation of the existing interior, the private and functional areas of the property are now positioned around a new central core. This comprises an open schema of living and dining areas as well as a conservatory. These three rooms are vital in the process of making this home a place of ease and comfort, a cozy retreat from the world. The fireplace forms the living room's central element, while the dining area and conservatory interact freely with the exterior space. Materials were chosen for their strong aesthetic qualities as well as their textural characteristics and craftsmanship. The designers selected the materials that offered the highest quality in detail, longevity and patina.



LIVING WITH ALL SENSES

Rheinland Pfalz



The hand-blown light installation ornamenting the entrance draws the gaze and offers an aesthetically stimulating contrast to the muted tones of the interior fittings.



An array of colors and structures lends depth to the apartment, while neutral, homogeneous surfaces counterbalance this and highlight the interior's contrasts and accents. Graywacke, a sandstone that embraces the tonal spectrum from cool blue-gray through various subtle hues to warm red-brown tones, forms the material basis for both the interior and exterior areas, the kitchen being the only exception. Glossy, extravagant and surprising, tones of amethyst attest to the client's joyful, experimental nature.



Homogeneous surfaces contrast with an array of texturized surfaces and invite tactile engagement with the living space.



Project: House in the Park. Designer: KEGGENHOFF | PARTNER. Location: Rheinland-Pfalz, Germany. Year of completion: 2013. Size: 483 sqm. Lamp (Hallway): Bocci. Photos: Constantin Meyer Photographie.



WHO WINS IN OLD VS.
NEW? - THAT'S PERFECT
IMPERFECTION!

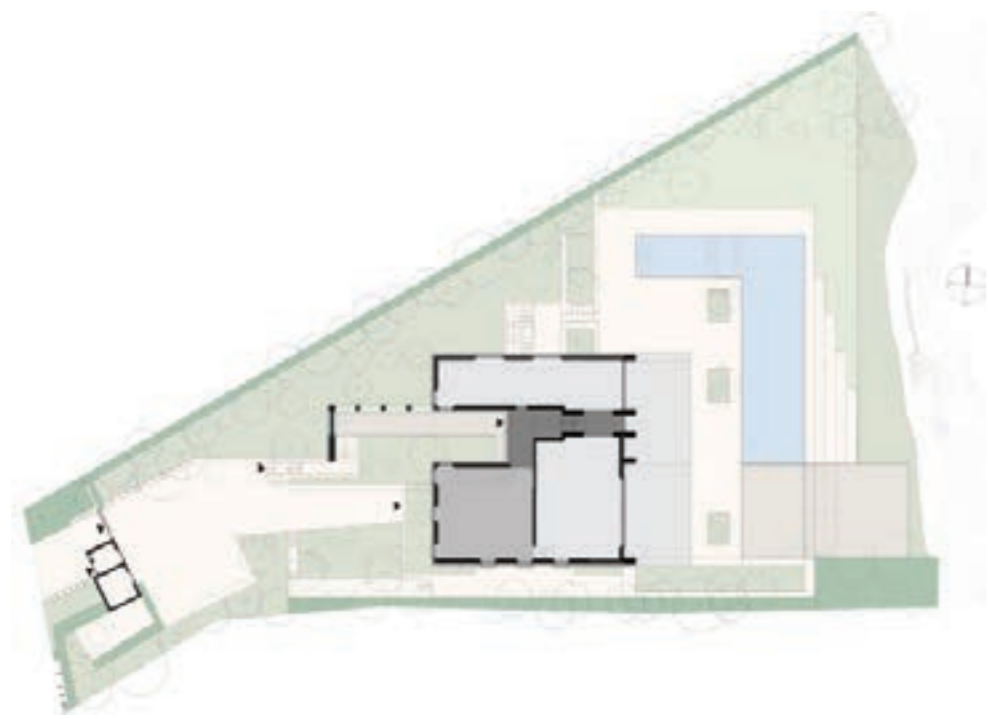
Mallorca



Majorcan design shapes the character of the interior.

A "place for communication" was to be established in the southwest of Majorca, adjacent to the sea and with a view of the local harbor. KEGGENHOFF I PARTNER developed a meeting place for friends and family. Calm and composure were central themes for the design. With its shape, the building is in stark contrast with the cliffy coast. The use of old wood for the green courtyard should show the power of nature in this place. In the interior, typical Majorcan design imbues the rooms with character by breaking up homogenous surfaces with original imperfection. No experience offers more diversity than living by the sea. The ever-changing power of the water, its fleeting appearance and its ability to reflect the surrounding landscape all inspired

this special place for relaxation. The ground floor has a flowing spatial arrangement and houses an office area, an indoor and outdoor kitchen and a spa facing the pool. The private areas and the fitness and spa rooms are located on the upper floor, while technical equipment and services can be found in the basement. The outdoor areas pick up on imaginary lines that radiate from the house and are staggered to accommodate the sloping site.



It's a place of calm with views of the harbor and sea. This unique perspective determines each room's orientation. the topography of the sitting and relaxation areas correspond to the almost five meters' height difference between the street and the coastline.



Project: House Near the Sea. Designer: KEGGENHOFF I PARTNER. Location: Mallorca, Spain. Year of completion: 2013. Size: 1010 sqm. Lamps: Panton. Furniture (outdoor): B&B Italia. Photos: Constantin Meyer Photographie.

