



Living in Style

Chris van Uffelen

Architecture + Interiors

BRAUN

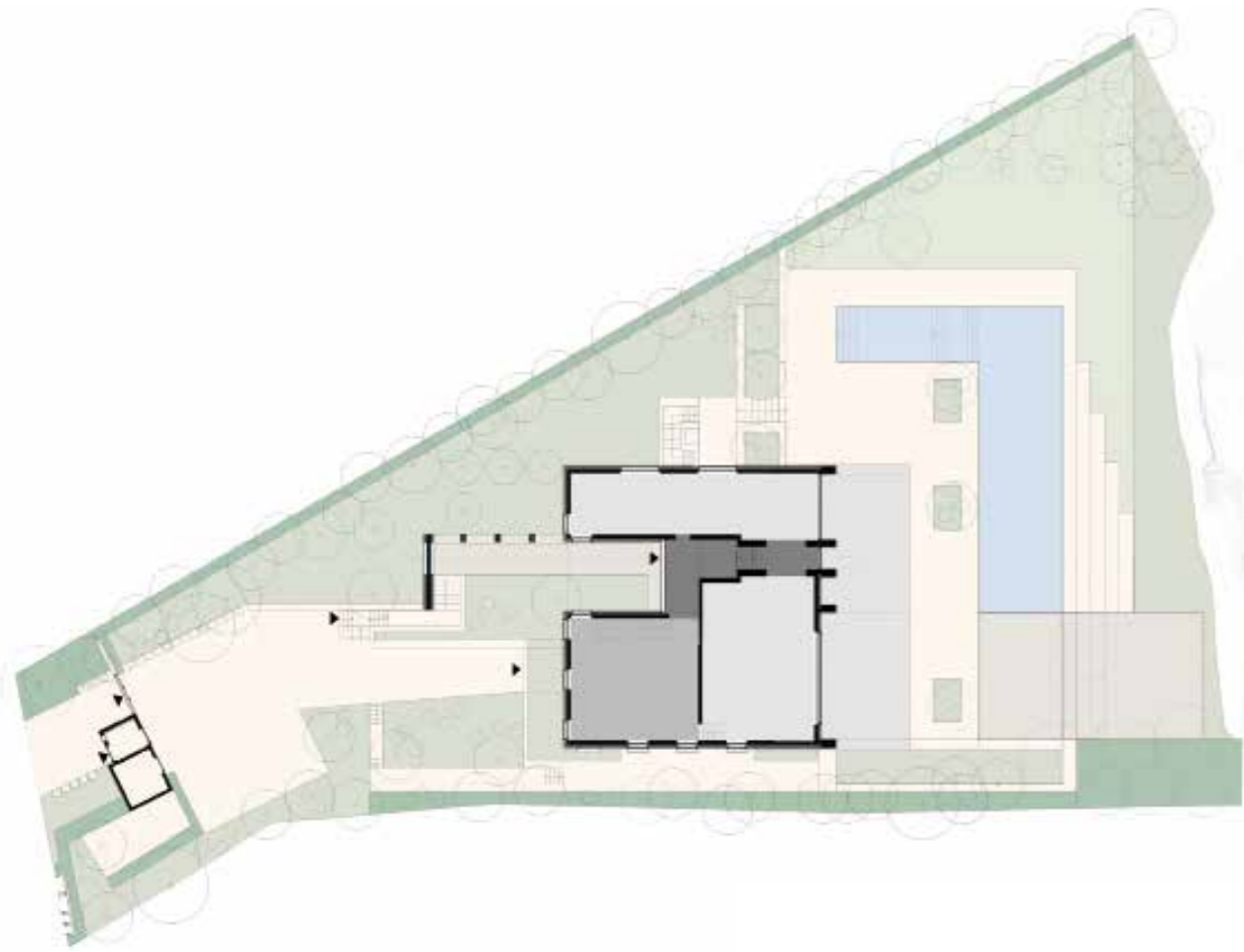
HOUSE NEAR THE HARBOUR

HIER WIRD DIE REDAKTION SPÄTER EINEN TEASER-TEXT EINFÜGEN
IN THIS SPACE THE EDITORIAL OFFICE WILL INSERT A TEASER TEXT

Architect | Keggenhof | Partner
Interior Design | Keggenhof | Partner
Gross floor area | 2,864 m²
Address | Mallorca, Spain
Completion | 2013



The concept behind this design was to develop a 'meeting place' in close proximity to the sea on the south-west side of Mallorca. A refuge was built that would also serve as a meeting place for friends and family. The cubic form of the house contrasts the rough appearance of the nearby coastline. The main focus of the design was placed on providing a tranquil place in which to relax. The living area, guest suite, and indoor and outdoor kitchens are all located on the ground floor, while the technical equipment and services are housed in the basement. The private rooms, fitness and wellness areas can be found on the upper floor. Lounges and a large table form an outdoor gathering space.



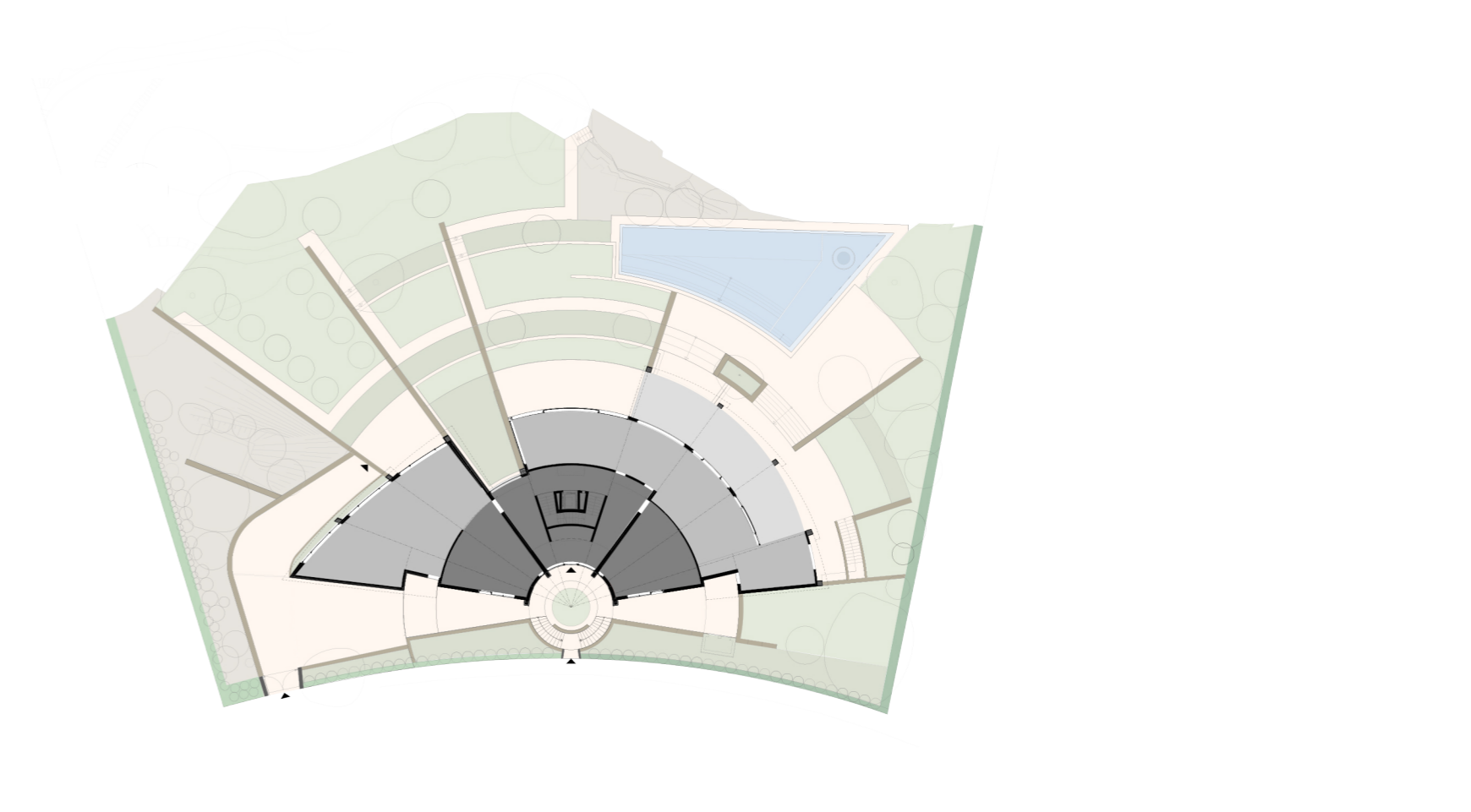
SPOTLIGHT CONCEPT

The use of solid natural stone responds to the environment, reflecting the power of the ocean and the solid mass of the cliffs along the coast.

HOUSE NEAR THE SEA

HIER WIRD DIE REDAKTION SPÄTER EINEN TEASER-TEXT
EINFÜGEN
IN THIS SPACE THE EDITORIAL OFFICE WILL INSERT A
TEASER TEXT

Architect | Keggenhof | Partner
Interior Design | Keggenhof | Partner
Gross floor area |
Address | Mallorca, Spain
Completion | 2013



There is no place on earth that offers more diversity than living by the sea. The changing power of the water, its appearance and its ability to reflect the surrounding landscape inspired the creation of a special place in which to relax. The ground floor has a flowing spatial arrangement and houses an office area, and indoor and outdoor kitchen and a spa area oriented towards the pool. The private areas are located on the upper floor, while technical equipment and services can be found in the basement. The outdoor areas pick up on imaginary lines that radiate from the house and are staggered to suit the sloping site.



SPOTLIGHT

In a figurative sense, this house is based on the concept of a hand-held fan and a play of retreat and visibility. The radial arrangement allows each room to open out towards the ocean and the connections between each of the individual rooms are arranged so as not to disturb the stunning views.