



Light in Architecture

Chris van Uffelen

BRAUN

Keggenhoff I Partner
(Architektur, Innenarchitektur, Design)



PROJECT FACTS

Address: confidential. Client: confidential. Completion: 2011. Gross floor area: 870 m².
Building type: castle renovation. Lighting technique: LEDs in combination with low voltage lighting / BUS technology. Light function: presentation of particular materials and surfaces in terms of craftsmanship, tradition and quality. Ecological aspects of lighting: use of intelligent lighting management systems with motion sensors and dimmer functions.



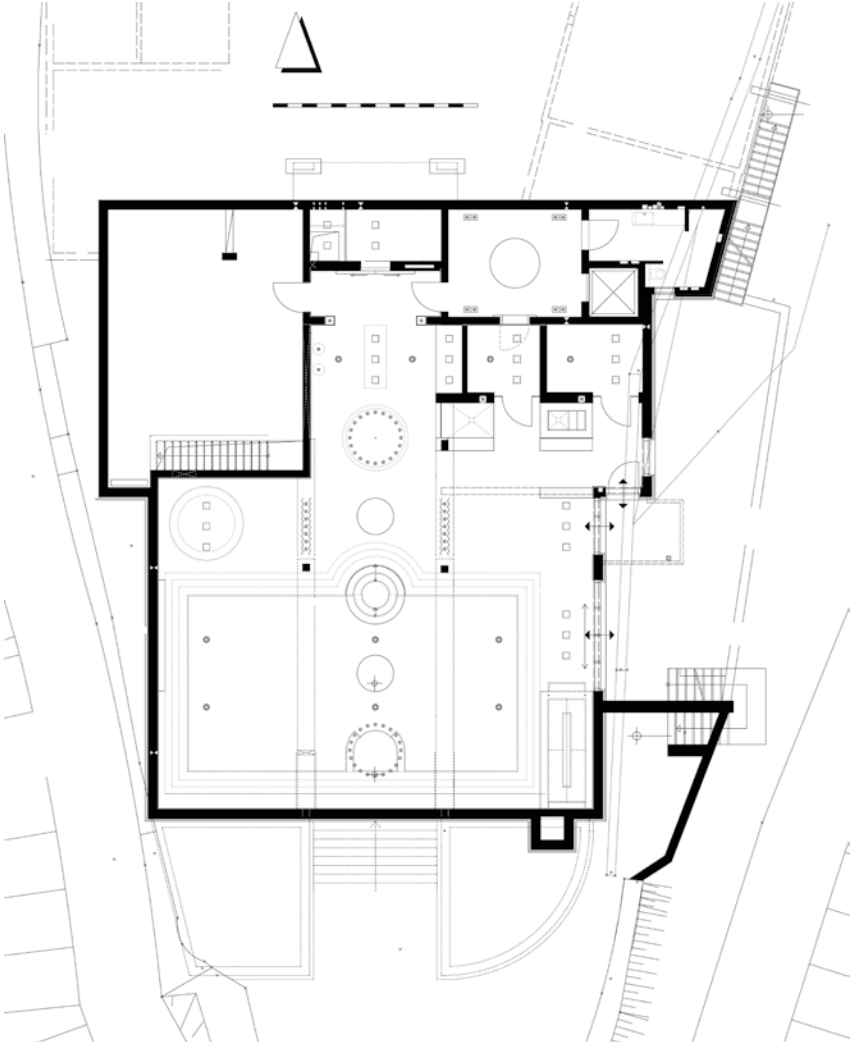
↑ | Access to rprivate space
→ | Wine cellar, with subtle wall lighting

Burg am Rhein

Confidential

The unusual nature of this architectural project included joining a preserved section of the old castle with the parameters of the new building, meeting modern living standards. The interior design characterizes areas of representation and communication as well as places of retreat and atmosphere. The upper floor houses private areas, while the circulation and service areas on the lower floor are more dominant, presented as vast, generous spaces. The reception area, as a centralized spatial gesture, creates a focal point and determines the alignment of all the other rooms. The wellness area is located in the cellar of the new building and is presented as an important place for relaxation and regeneration.





← | Cellar plan
↓ | Pool in wellness are, with special lighting feature



↑ | Combination of daylight and artificial light
← | Retreat area

